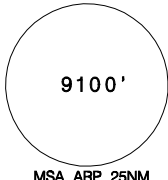
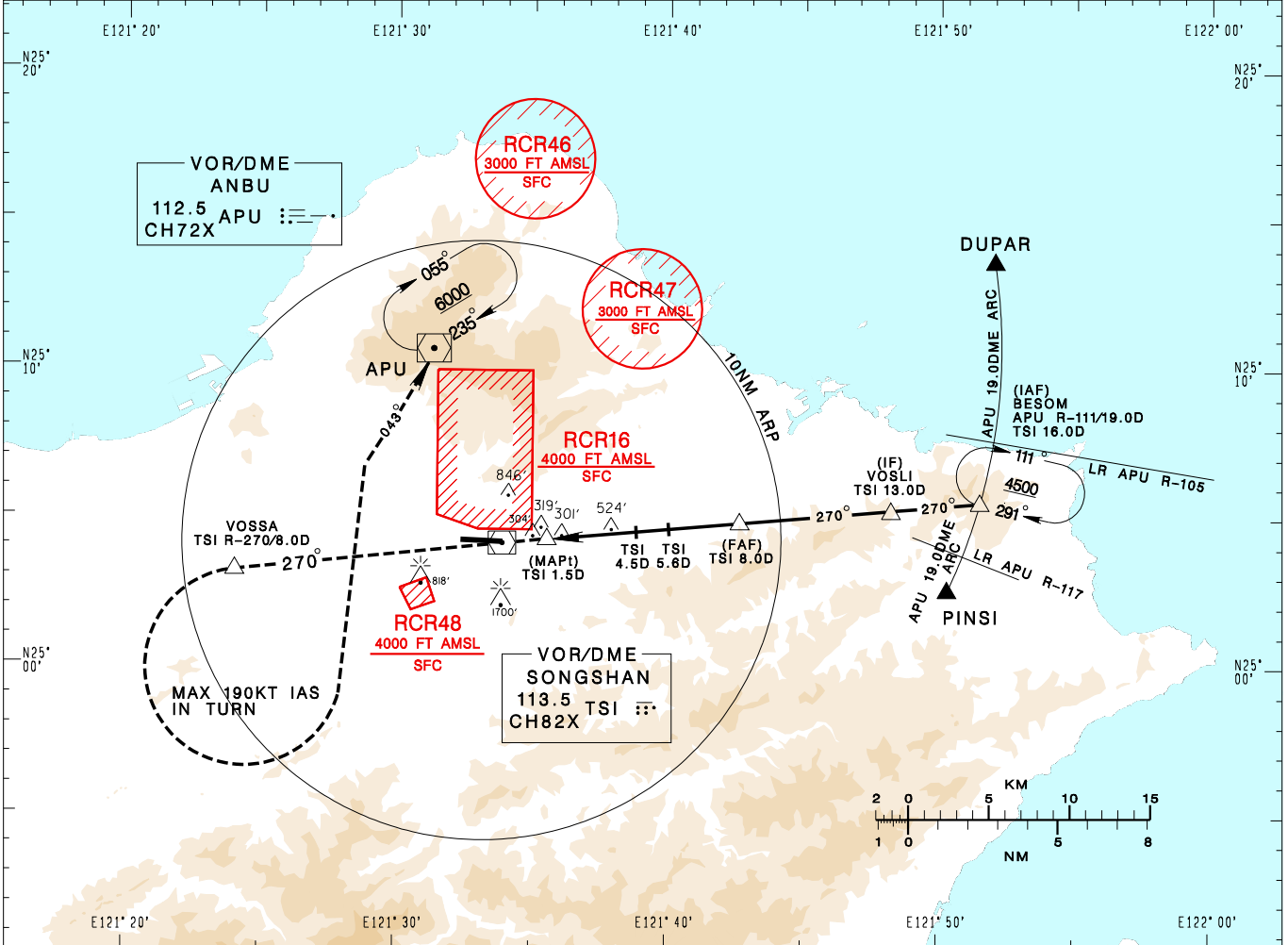


臺北/松山機場
TAIPEI/SONGSHAN AD

RCSS
VOR RWY28

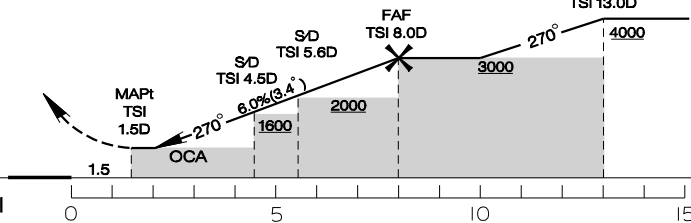
TAIPEI APP 119.7 119.6 125.1	SONGSHAN TWR 118.1	ATIS 127.4 341	 <p>9100'</p> <p>MSA ARP 25NM</p>	
Apt Elev: 18'	Rwy28 THR Elev: 14'	Trans Level: FL130		Trans Alt: 11,000'
BEARINGS ARE MAGNETIC; DISTANCES ARE NAUTICAL MILES; ELEVATIONS, HEIGHTS IN FEET				



DIST to TSI	3.0DME	4.0DME	4.5DME	5.0DME	5.6DME	6.0DME	7.0DME	8.0DME
ADVISORY ALT	1160	1520	1700	1890	2100	2260	2630	3000

MISSED APCH:
TRACK TSI R-270 TO VOSSA,
CROSS VOSSA AT OR ABOVE 3000,
THEN TURN LEFT TO TRACK APU R-223
TO APU, CLIMB TO 6000 AND HOLD.

*MISSED APCH TURN LIMITED TO
190 KT IAS.



CHANGES: RCR49 COMPLETELY WITHDRAWN

MINIMA (OCA IN FT, VIS IN M, OCH IN FT)				
CATEGORY	A	B	C	D
STRAIGHT IN	800/3600 782			
CIRCLING	1180/3600 1162	N/A		

NOTE

- 1.FINAL APCH COURSE CROSSES RWY CL EXTENSION AT 0.7NM FROM THR28.
- 2.DESCENT ANGLE FROM FAF IS 3.4°, NOT COINCIDENT WITH PAPI.
- 3.CIRCLING ONLY AUTHORIZED FOR CAT A HELICOPTERS.
- 4.A 1700ft-HIGH BUILDING AT 2.1NM SOUTH OF THR28.
- 5.A 818ft-HIGH BUILDING AT 2NM SW OF THR10.
- 6.CAUTION OBSTACLES UP TO 304FT AT 1NM EAST OF THR28 PENETRATE THE VISUAL SEGMENT SURFACE(VSS).
- 7.ATS SURVEILLANCE REQUIRED.

*DME REQUIRED.